



An Roinn Talmhaíochta,  
Bia agus Mara  
Department of Agriculture,  
Food and the Marine

## DAFM Supports For Agroforestry

**‘International Agroforestry Conference’ ,  
West Lodge Hotel, Bantry  
Friday 16<sup>th</sup> , November, 2023**

**Mr. Eugene Curran**

**District Inspector**

**DAFM**

**Mobile – 00 353 (0) 872536576**

**Email - [eugene.curran@agriculture.gov.ie](mailto:eugene.curran@agriculture.gov.ie)**



**An Roinn Talmhaíochta,  
Bia agus Mara**  
Department of Agriculture,  
Food and the Marine

## **Outline**

- **Origins and drivers of scheme**
- **Lessons learnt**
- **New supports**
- **Challenges**
- **Further information**



**An Roinn Talmhaíochta,  
Bia agus Mara**  
Department of Agriculture,  
Food and the Marine

# Origins and drivers of scheme

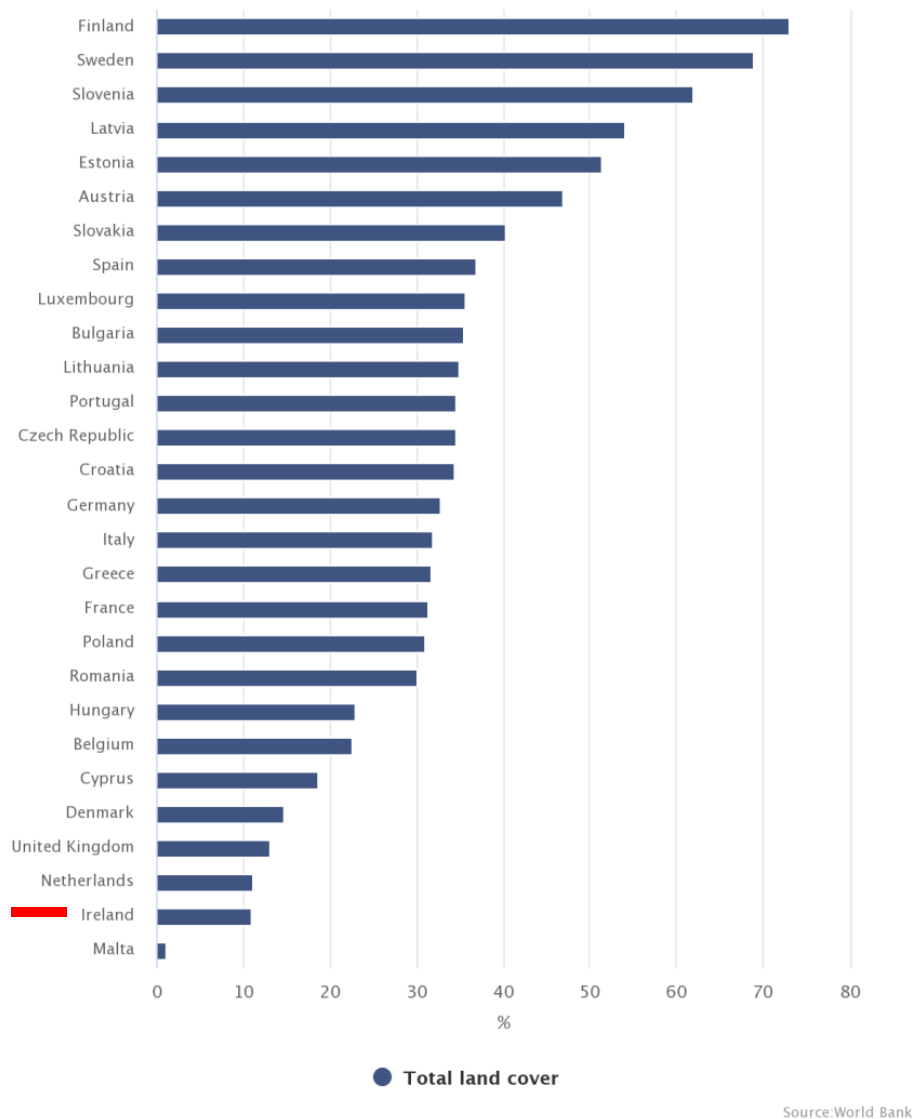


An Roinn Talmhaíochta,  
Bia agus Mara  
Department of Agriculture,  
Food and the Marine

## % Forest Cover In Ireland

Forestry accounted for **11.0 %** of Ireland's total land area in 2016, the second lowest among EU Member States. EU average is close to 40%

Figure 6.1 EU: Forest cover 2016



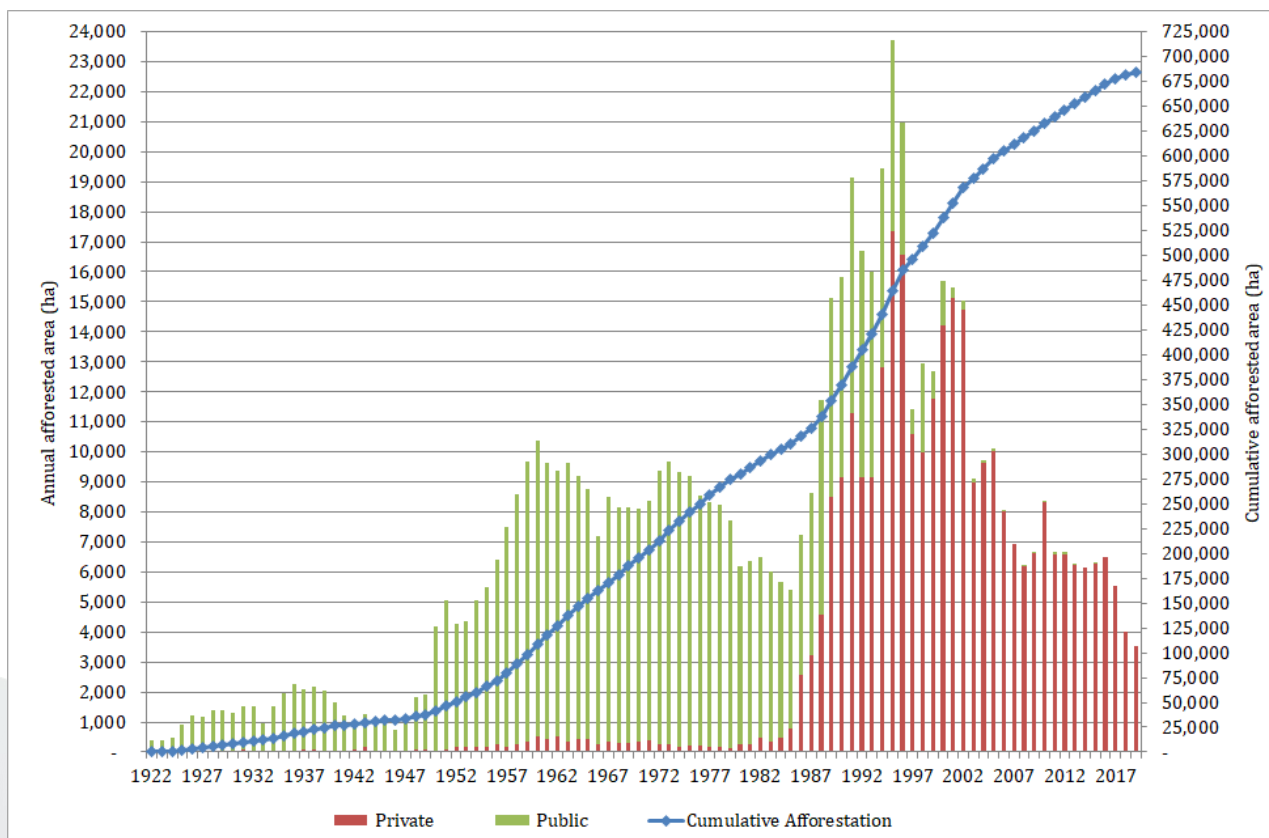
Source: World Bank

Source : Environmental indicators Ireland 2019. CSO.



An Roinn Talmhaíochta,  
Bia agus Mara  
Department of Agriculture,  
Food and the Marine

### Annual State and private afforestation (1922-2019).



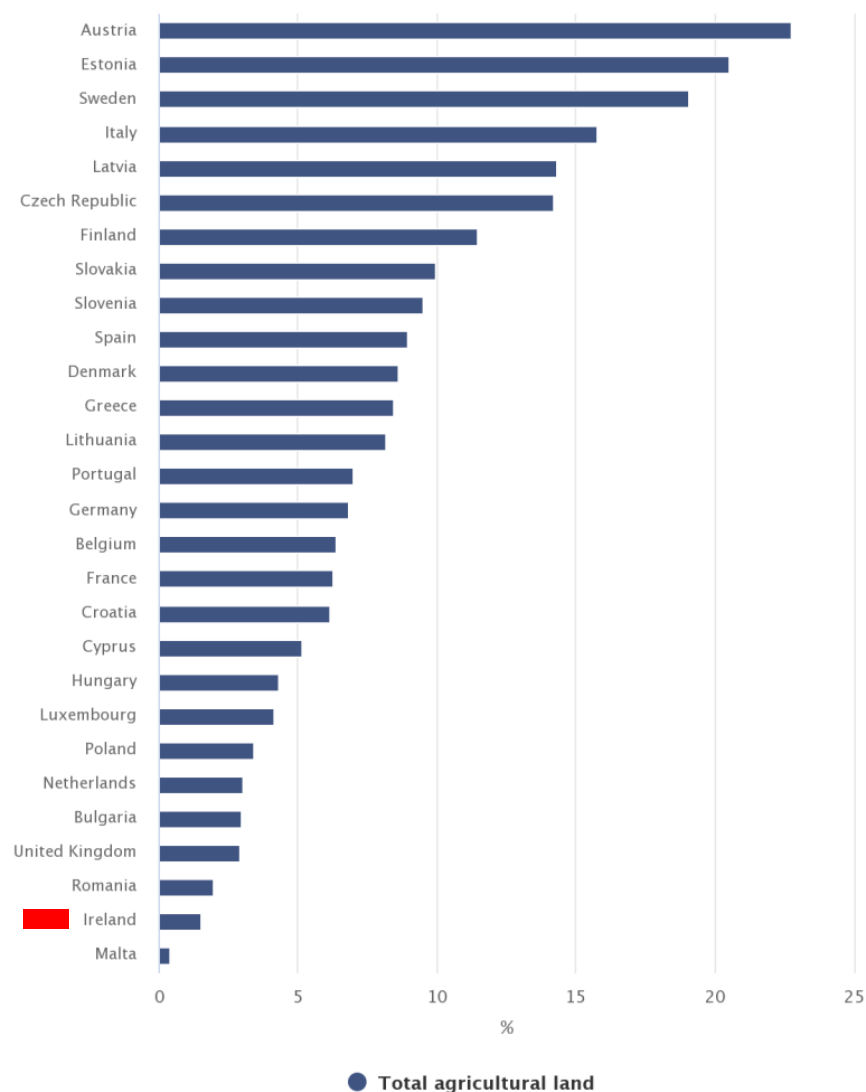


An Roinn Talmhaíochta,  
Bia agus Mara  
Department of Agriculture,  
Food and the Marine

## % Organic Farming in Ireland

- Land used for organic farming in Ireland accounted for 1.5% of total agricultural land in 2017 – the second lowest percentage among EU Member States. Austria, with 22.8%, had the highest.

Figure 6.2 EU: Organic agricultural land 2017



Source : Environmental indicators Ireland 2019. CSO

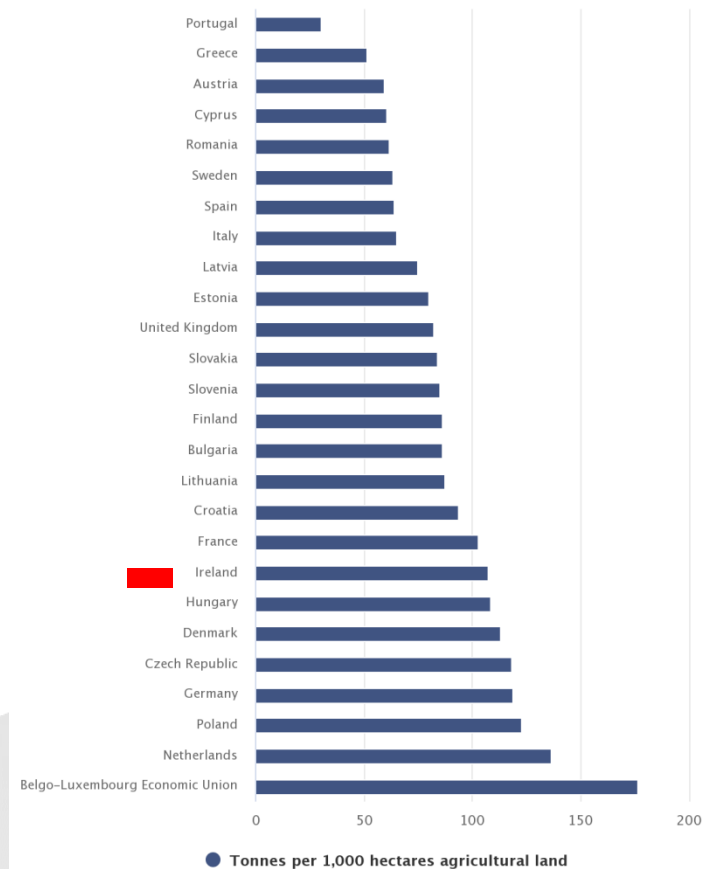
Source: Eurostat



## Fertiliser Sales 2017

- Ireland had the eighth highest level of fertiliser sales among EU Member States in 2017 at 107.6 tonnes per 1,000 hectare of agricultural land(CSO).

Figure 6.4 EU: Fertiliser sales 2017



Source: Eurostat



An Roinn Talmhaíochta,  
Bia agus Mara  
Department of Agriculture,  
Food and the Marine

## The Challenge

### Sustainable Forestry and Food Production

- Reducing animal feeds & chemical inputs.
- Increasing organic produce.
- Off setting emissions.
- Improving animal welfare.
- Diversifying economic return.
- Increasing forest/tree cover
- Tackling Climate Change



Low forest cover 11%



High Grass cover 59%





An Roinn Talmhaíochta,  
Bia agus Mara  
Department of Agriculture,  
Food and the Marine

## Something to Bridge Gap

**Forestry**



**Agriculture**

Photo – Eugene Curran



An Roinn Talmhaíochta,  
Bia agus Mara  
Department of Agriculture,  
Food and the Marine

## Agroforestry

- **Silvopastoral Systems (trees & grass)**
- **Silvoarable Systems (trees & crops)**
- **Forest Gardening/Permaculture/Food Forests**
- **Forest Farming (utilising mature plantations)**



An Roinn Talmhaíochta,  
Bia agus Mara  
Department of Agriculture,  
Food and the Marine

## Agroforestry Scheme 2015

- **The current DAFM measure is for Silvopasture**
- **Based on Research in Loughgall in N.I. by Professor Jim McAdam**
- **Focus on grass/grazing/silage/hay.**
- **Acceptable animals include sheep, poultry and small calves.**
- **15% fruit and nut species allowed**



Photo – Eugene Curran

Ballyhaise, Cavan  
TEAGASC



Photo – Eugene Curran

Kilnaclasha, Cork



Photo – Eugene Curran

Liscubba , Cork



**Approximately 22 years old**



An Roinn Talmhaíochta,  
Bia agus Mara  
Department of Agriculture,  
Food and the Marine

## **Benefits to the Farmer**

- **Renewable energy/biofuel**
- **Improved animal welfare**
- **Potential for high quality timber production**
- **Sustainable food production (lower inputs)**
- **Improved biodiversity**
- **Water protection**
- **Enhanced landscapes & Working Environment**
- **Improved & diversified production**
- **Longer grazing season**



An Roinn Talmhaíochta,  
Bia agus Mara  
Department of Agriculture,  
Food and the Marine

## Silvicultural Benefits

- **Tubes mimic side competition.**
- **Less filling in.**
- **No spraying or fertilizer.**
- **Vegetation control by the animals**
- **Fewer trees to shape.**
- **Thinning intervention, timing not as critical.**
- **Final crop trees identified early.**
- **Potential for veneer quality timber.**



An Roinn Talmhaíochta,  
Bia agus Mara  
Department of Agriculture,  
Food and the Marine

## 2015 Scheme

### Target

**200 ha of newly-created agroforestry by 2020**

### Result

- **106 applications to date, potential for 260 ha.**
- **over 50 ha planted,**
- **23 farmers in receipt of payments,**



Photo – Eugene Curran



An Roinn Talmhaíochta,  
Bia agus Mara  
Department of Agriculture,  
Food and the Marine

## Examples



Munnig North, Cork



Headford, Galway



Ballydehob, Cork



Durrus, Cork





An Roinn Talmhaíochta,  
Bia agus Mara  
Department of Agriculture,  
Food and the Marine

## Examples cont.



Kilcock, Kildare



Roscarberry, Cork



Slane, Meath



Corglass, Monaghan

Photos – Eugene Curran



An Roinn Talmhaíochta,  
Bia agus Mara  
Department of Agriculture,  
Food and the Marine

# Lessons learnt



An Roinn Talmhaíochta,  
Bia agus Mara  
Department of Agriculture,  
Food and the Marine

## Lessons

- **Plastic ties were eaten by sheep , use wire instead.**
- **Tubes were being crushed by sheep, second post needed.**
- **Augers could be used for digging holes.**
- **Geo textiles probably best replacement for tubes.**
- **Avoid monocultures.**
- **Demand for fruit and nut trees, 15% introduced.**
- **Headlands required if machinery is used.**
- **No fertilizer, promote multi species swards.**
- **Grants not sufficient for establishment.**
- **Premium duration not long enough.**
- **Continuous monitoring.**



Photo – Eugene Curran



An Roinn Talmhaíochta,  
Bia agus Mara  
Department of Agriculture,  
Food and the Marine

# New/potential supports 2023-2027



An Roinn Talmhaíochta,  
Bia agus Mara  
Department of Agriculture,  
Food and the Marine

## **Afforestation Programme Supports For Agroforestry**

- **Silvopastoral Systems (FT 8 was GPC 11)**
- **Silvoarable Systems (Rows less than 10 metres wide, Pilot)**
- **Forest Gardening (Pilot measure)**



**An Roinn Talmhaíochta,  
Bia agus Mara**  
Department of Agriculture,  
Food and the Marine

## Grant & Premium Rates 2023-2027

	Forest Type	Grant Rates (excluding fencing)		Premium Payments				
		Current Grant/ha	Proposed Grant/ha	Current Premiums/ha	Proposed Annual Premium/ha	Current Number of Premiums	Proposed Number of Premiums for Non-Farmers	Proposed Number of Premiums for Farmers
FT1	Native Forests	€5,620	€6,744	€665	€1,103	15	15	20
FT2	Forests for Water*	New	€6,744	New	€1,142	New	15	20
FT3	Forests on Public Lands**	€9,920	€11,044	n/a	n/a	n/a	n/a	n/a
FT4	NeighbourWoods***	€8,800	€10,200	New	€1,142	New	15	20
FT5	Emergent Forests	New	€2,500	New	€350	New	15	20
FT6	Broadleaf, mainly oak	€5,620	€6,744	€645	€1,037	15	15	20
FT7	Other Broadleaf	€3,595	€4,314	€605	€973	15	15	20
FT8	Agroforestry	€5,620	€8,555	€645	€975	5	10	10
FT9	Seed Orchards	New	€10,000	New	€1,142	New	15	20
FT10	Continuous Cover Forestry	New	€5,421	New	€912	New	15	20
FT11	Mixed High Forests: Conifer, 20% broadleaves	€3,710	€4,452	€590	€863	15	15	20
FT12	Mixed High Forests with mainly spruce, 20% broadleaves	€3,215	€3,858	€510	€746	15	15	20
Native Tree Area Scheme will be paid at FT1 and FT2 rates. Premiums will be paid over 10 years rather than 20 at a rate of €2,206 per ha annually for NTA1 and €2,284 per ha annually for NTA2								
*	Additional payment of €1,000 per ha will be paid to landowner on completion of planting							
**	Grant includes Trails, Seats & Signage Facilities and Derelict Site payment							
***	Grant includes Facilities payment							



An Roinn Talmhaíochta,  
Bia agus Mara  
Department of Agriculture,  
Food and the Marine

## Agroforestry Payments (Silvopasture)

**Grants – Old rate € 5,620/ha, New rate € 8,555/ha**

**These figures do not include fencing rates.**

**Premiums – Old rate € 645/ha , New rate € 975/ha**

**Premium duration – old rate 5 years, new rate 10 years**

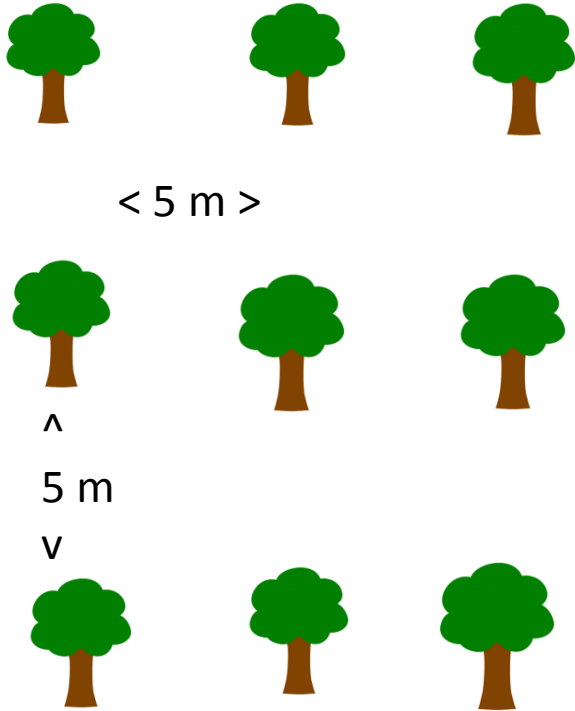
**(for farmer and non farmer)**



# Designs

## Singly

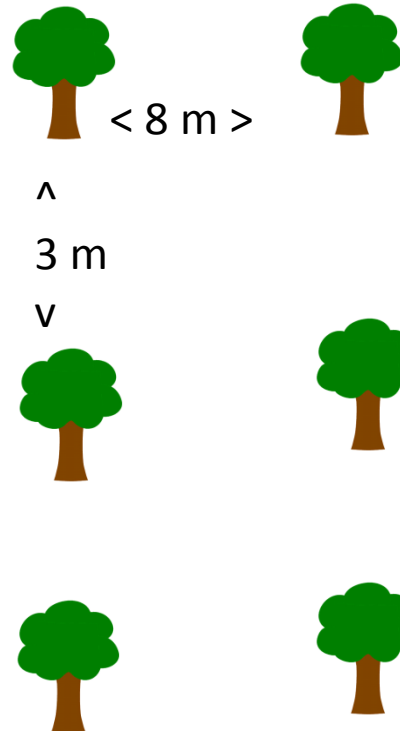
400 plants/ha



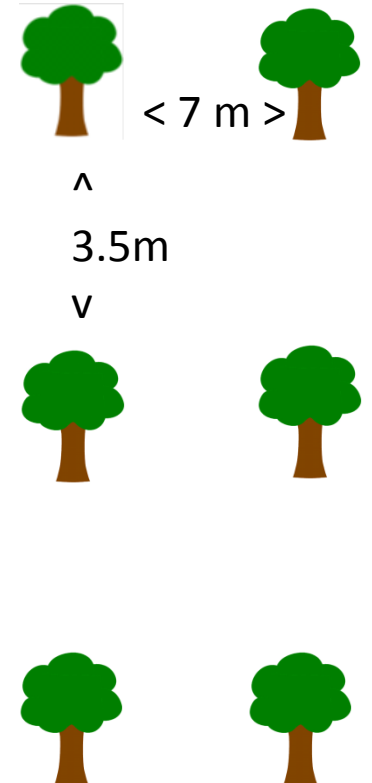
Minimum 400 trees/ha

## Rows

416 plants/ha



408 plants/ha







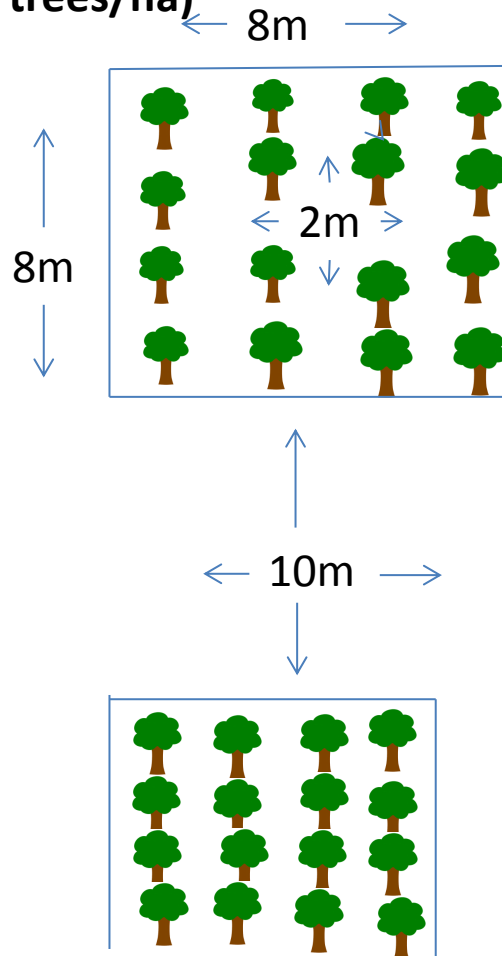
# Designs – cont.

## Groups

(400 trees/ha)

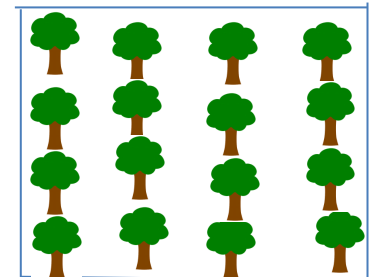


Suitable for Cattle



16 plants/plot

25 plots/ha

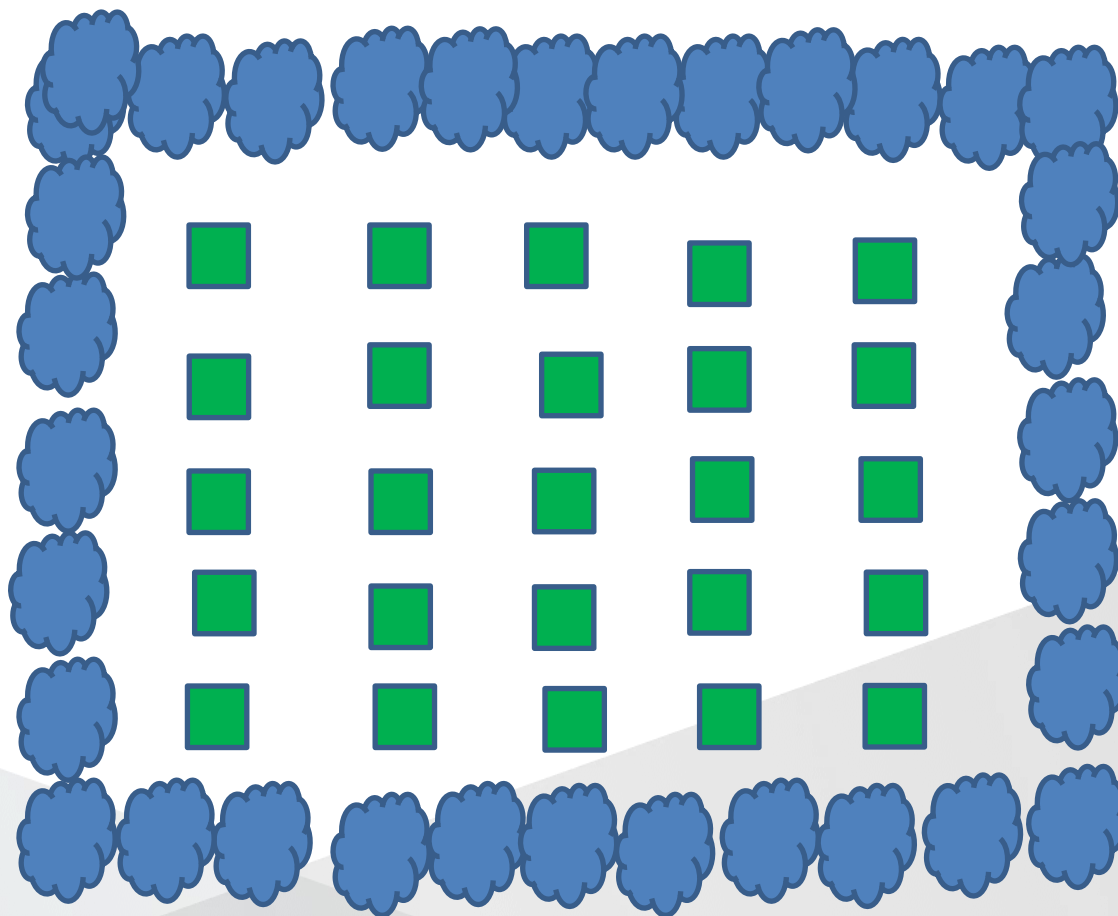




An Roinn Talmhaíochta,  
Bia agus Mara  
Department of Agriculture,  
Food and the Marine

# Group Layout

Each plot Stock fenced, e.g. for 1ha





An Roinn Talmhaíochta,  
Bia agus Mara  
Department of Agriculture,  
Food and the Marine

## Woodland Improvement Scheme

€1,200 /ha

- **Replace Tubes with Geotextile mesh.**
- **Remove or replace second post.**
- **Formative shaping.**



Photo – Eugene Curran



An Roinn Talmhaíochta,  
Bia agus Mara  
Department of Agriculture,  
Food and the Marine

## 2. Silvoarable Systems

**Pilot - 30 ha /year, Grant €6000, Prem. € 829/year, 20% F&N trees**

**Growing crops amongst trees (mostly rows)**



**Cereals**



**Fruit**



**Vegetables**



An Roinn Talmhaíochta,  
Bia agus Mara  
Department of Agriculture,  
Food and the Marine

## Example



Photo – Eugene Curran

### Ireland (Alan Kingston)

- **Timber species + Aronia Berries**
- **A kilometer of Aronia (10 rows , 8 metres apart)**



An Roinn Talmhaíochta,  
Bia agus Mara  
Department of Agriculture,  
Food and the Marine

# Silvoarable Systems



Photo – Eugene Curran

**Germany –**  
Poplar, Robinia, Corn, potatoes, wheat



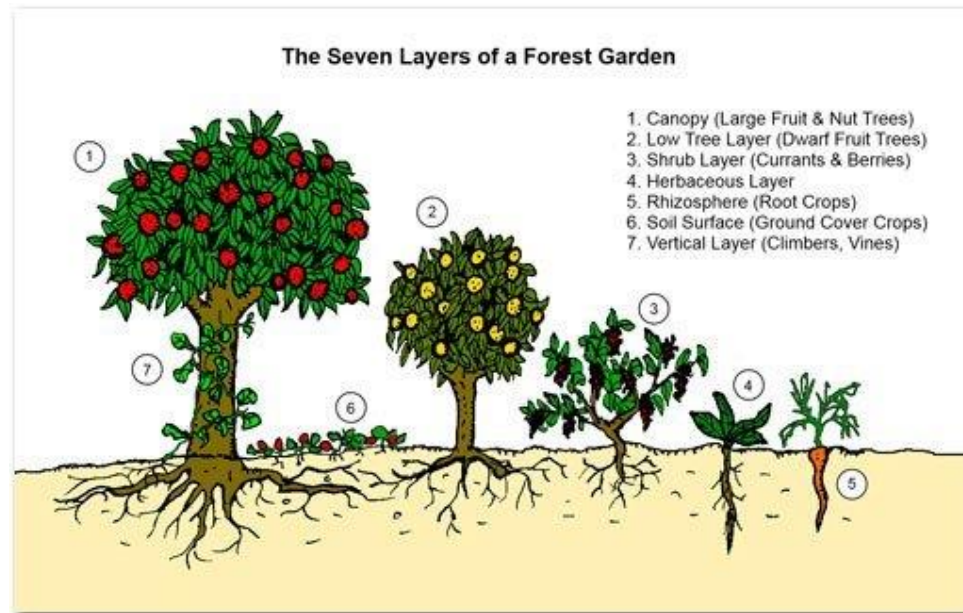
Photo – Eugene Curran

**Greece –**  
Olives /Barley



An Roinn Talmhaíochta,  
Bia agus Mara  
Department of Agriculture,  
Food and the Marine

## 3. Forest Gardening



**Forest Gardens are probably the worlds oldest form of land use and most resilient agroecosystem. Pioneered by Robert Hart in the 1980s in the UK.**



An Roinn Talmhaíochta,  
Bia agus Mara  
Department of Agriculture,  
Food and the Marine

## Forest Gardening

- **Pilot measure , 6ha/year, 1ha plots,**
- **Grant €6000, Prem. € 829/year, 40% F&N trees**
- **Initial design is crucial**



Photo – Eugene Curran

**Netherlands - Funding from a water authority.**



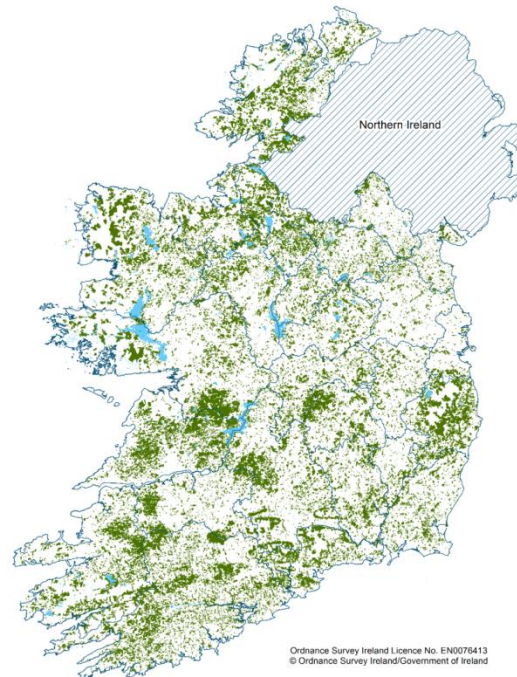


An Roinn Talmhaíochta,  
Bia agus Mara  
Department of Agriculture,  
Food and the Marine

## 4. Forest Farming

Currently not grant supported

**Utilisation of existing plantations for food production**



**Forest cover in Ireland.**



An Roinn Talmhaíochta,  
Bia agus Mara  
Department of Agriculture,  
Food and the Marine

# Ash die back – RUS scheme

**Agroforestry is an Option**





An Roinn Talmhaíochta,  
Bia agus Mara  
Department of Agriculture,  
Food and the Marine

## Organic Payments



Photos – Eugene Curran



- Land classified as agroforestry.
- 5 year scheme.
- €2,000/ha for the first year of conversion.
- €1,400/ha thereafter.



An Roinn Talmhaíochta,  
Bia agus Mara  
Department of Agriculture,  
Food and the Marine

## Potential Payments

Land classified as forestry/agroforestry.  
Trees protected under the 2014 forestry act.

- **10 year Forestry premium payments**
- **5 year Organic payments**
- **Biss Payments**



An Roinn Talmhaíochta,  
Bia agus Mara  
Department of Agriculture,  
Food and the Mar

**ACRES**

Agri-Climate Rural Environment Scheme

**Land classified as Agriculture**

**(Agri-Climate Rural Environment Scheme)**

- **5 Year scheme**
- **General Measure €7,311/year**
- **Co-operation Measure €10,500/year**
- **Land classified as agriculture.**
- **Replaces GLAS scheme.**



An Roinn Talmhaíochta,  
Bia agus Mara  
Department of Agriculture,  
Food and the Marine

**ACRES**

Agri-Climate Rural Environment Scheme

- **Creation of Traditional Orchards**
- **Planting trees in riparian zones**



**Traditional Orchard**

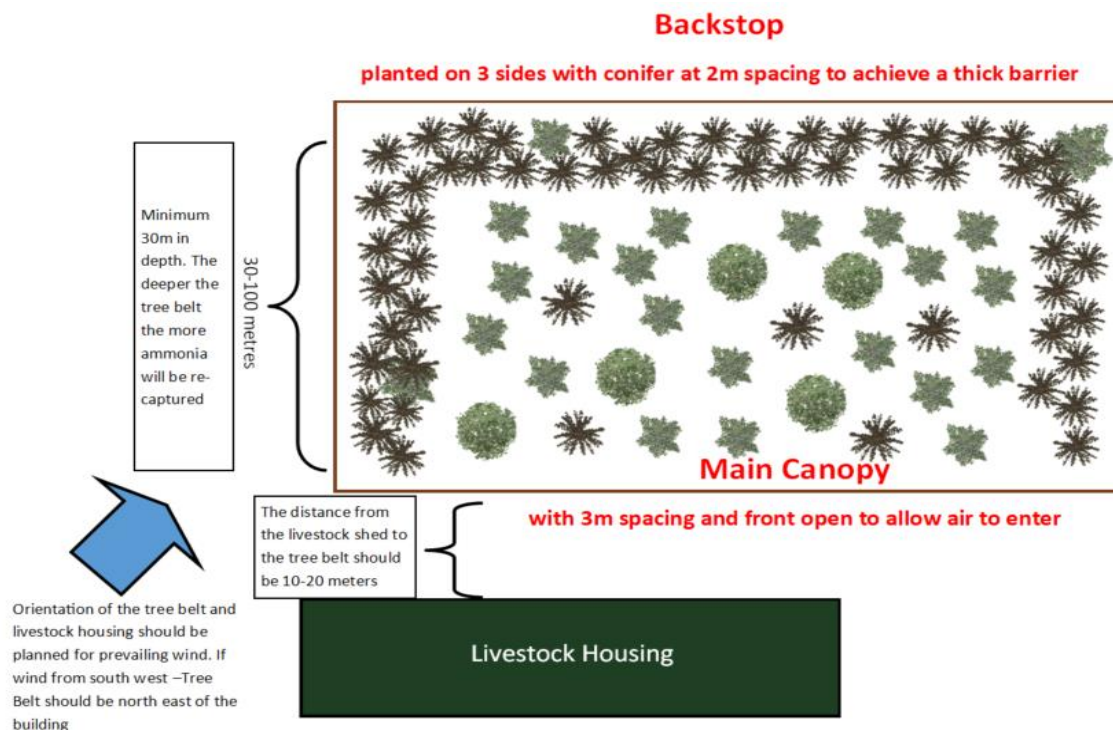
**Photo: Con O'Riordan DAFM**



An Roinn Talmhaíoch  
Bia agus Mara  
Department of Agricu  
Food and the Marine



- **Tree planted singly, rows or groups ( >0.1 ha and < 1.0 ha).**
- **Tree belts for Ammonia capture**





An Roinn Talmhaíochta,  
Bia agus Mara  
Department of Agriculture  
Food and the Marine



## Uptake

- **Total of 409,800 trees to be planted under the ACRES tree planting measure By 3200 applicants planting in rows, groups or parkland.**
- **121 applicants selected the tree belt for ammonia capture a total of 36.7 Hectares**
- **Another 100,387 trees in the Planting Trees in Riparian buffer zones measure.**
- **And 2,053,789 metres of new hedgerows to be planted.**
- **1,546 applicants planting traditional orchard (10 trees) •**





An Roinn Talmhaíochta,  
Bia agus Mara  
Department of Agriculture,  
Food and the Marine

## ECO scheme

### Agricultural Measure

- **5 year scheme, Agricultural Practice 4**
- **Plant 3 trees or 1 metre of hedge/ha**
- **or 6 trees /ha enhanced option.**
- **€60 to €65 /ha**
- **Parkland trees**



Photos – Eugene Curran



An Roinn Talmhaíochta,  
Bia agus Mara  
Department of Agriculture,  
Food and the Marine

# Challenges

- **Training / Education – of practitioners.**
- **Research – All aspects**



An Roinn Talmhaíochta,  
Bia agus Mara  
Department of Agriculture,  
Food and the Marine



Photos – Eugene Curran

**Field Days – Very important**



**An Roinn Talmhaíochta,  
Bia agus Mara**  
Department of Agriculture,  
Food and the Marine

# Further information



An Roinn Talmhaíochta,  
Bia agus Mara  
Department of Agriculture,  
Food and the Marine

### Further information-

**DAFM** = [www.gov.ie/en/publication/642e6-forestry](http://www.gov.ie/en/publication/642e6-forestry)

**Irish Agroforestry Forum-**  
<https://irishagroforestry.ie/>

**Farm Woodland Forum =**  
<https://www.agroforestry.ac.uk/>

**European Agroforestry Federation (EURAF) =**  
<https://euraf.isa.utl.pt/>





An Roinn Talmhaíochta,  
Bia agus Mara  
Department of Agriculture,  
Food and the Marine

# Thank You

