

Whole Farm Planning to Support Agroforestry Creation

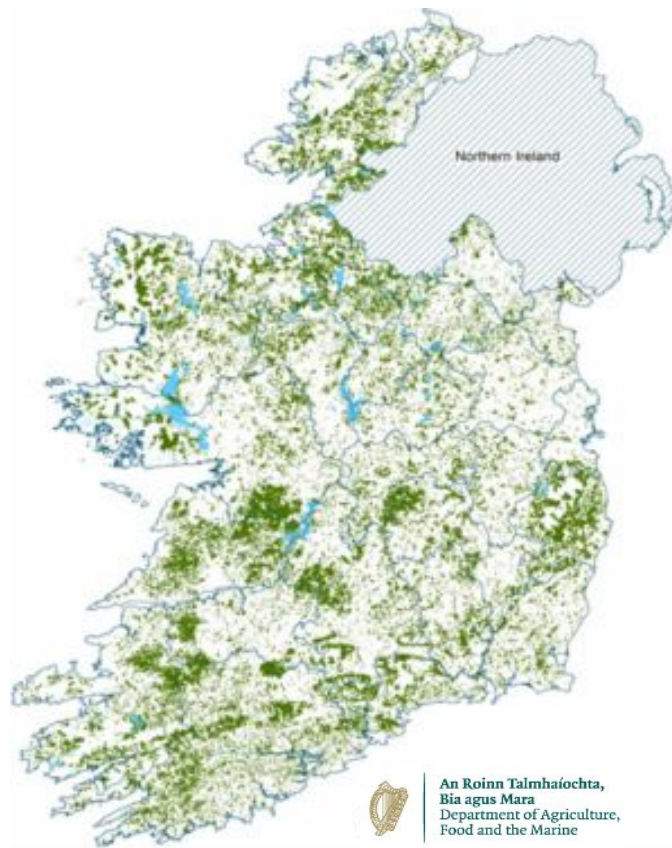


**John Casey, Teagasc
(Horizon Europe Agroforestry Project AF4EU)**

24,000 private owners
81% farmers, 411,000 ha



Ireland's forests and Forestry Programme supporting...



808,000 ha
11.6% of land
area

Wood and wood based product
exports €682 million 2021



Ecosystem services



Employment, > 9,000 FTEs
mainly in rural areas



Getting started in forestry



Whole farm planning



Via registered forester



Whole farm planning

**Permanent
land use
change**

**Enhancing farm
sustainability -**

**On-farm
pension**

**Thinking of future -
Retirement
Inheritance
Succession planning**

**Suitable forest
types for you**

**On-farm timber
/ fuel sales**

**Tax and
efficiency**

**Enhancing family
farm income**

**Interactions with
farm enterprises
and schemes**

**Family resource /
amenity to enjoy**

**Water quality
Carbon capture**



BISS and Agroforestry - eligibility

Forestry who planted since 2009 and which will be planted in 2023, can be eligible for a BISS, by **satisfying** scheme **conditions**, including:

- ✓ The area must have given **a right to payment under the Basic Payment Scheme (2015-2022)**
- ✓ Farmers who wish to benefit from the BISS payment of afforested lands **must be the person or persons eligible for payment of the forestry premium in the relevant year**
- ✓ Afforested lands must **meet all the requirements of the forestry scheme** under which it was established.



ACRES and Agroforestry

- Agroforestry is compatible with ACRES
- Applicants considering participation in ACRES can explore opportunities in National Forestry Programme when planning for the scheme
- **ACRES Terms & Conditions** allow for parcel interaction with the Afforestation Scheme without financial penalty e.g.
 - Parcel with ACRES action may subsequently be split to facilitate planting
 - DAFM may authorise, under certain conditions, an action undertaken as part of ACRES contract to be terminated or its area adjusted before its normal end date without penalty or full reimbursement of funding already paid out, during its period of operation

Direct Payments and Forestry

CRISS - Complementary Redistributive Support for Sustainability Scheme ("Frontloading")

- Annual decoupled payment, per eligible hectare, to farmers entitled to basic income support
- For eligible applicants:
 - Payment is on **first 30 eligible hectares** claimed
 - Can include **eligible** forestry/ agroforestry



Organic Farming Scheme (OFS) and Forestry

- Afforestation is recognised as contributing to the creation of a valuable landscape mosaic at farm-level.
- OFS parcels **may be converted to forestry** during the OFS contract period - without penalty
- Land declared as Agroforestry can be **eligible** for:

1. Agroforestry grants/ premiums,
2. BISS/CRISS
3. Organic payments (drystock rate)

all on the same land parcel(s)



Areas of Natural Constraint and Afforestation

The previous designated land types of '**Mountain**', '**More Severely**' and '**Less Severe**' are now Category 1, 2 and 3, with the following rates:

Land Category	Area	2022 Rate
Category 1	1 st 12 ha	€148.00
Category 1	13 - 34 ha	€112.00
Category 2	1 st 10 ha	€111.00
Category 2	11 - 30 ha	€104.00
Category 3	1 st 8 ha	€93.00
Category 3	9 - 30 ha	€88.25

Case Study 1 – Agroforestry Option

- Farmer A (drystock) has 35 ha
- Eligible for BISS, CRISS, ANC (Category 2) and Organics
- Decides to plant 5 ha of Agroforestry (Silvo-pastoral system) in 2024

Scheme		Per hectare (€)	Total 2024
BISS	(35 ha)	€154.64 x 35	€5,412
CRISS	(30 ha)	€42.34 x 30	€1,270
ANC	(30 ha)	€111x10 +€104 x 20	€3,190
Agroforestry	(5 ha)	€975 x 5	€4,875
Organics (drystock)	(35 ha)	€300 x 35	€10,500
			€25,247

Financial impact of Whole Farm Planning 2024- 2027

Scheme		2024	2025	2026	2027
BISS	(35 ha)	€5,412	€5,412	€5,412	€5,412
CRISS	(30 ha)	€1,270	€1,270	€1,270	€1,270
ANC	(30 ha)	€3,190	€3,190	€3,190	€3,190
Agroforestry	(5 ha)	€4,875	€4,875	€4,875	€4,875
Organics (drystock)	(35 ha)	€10,500	€10,570	€8,750*	€8,750*
		€25,247	€25,247	€23,497	€23,497

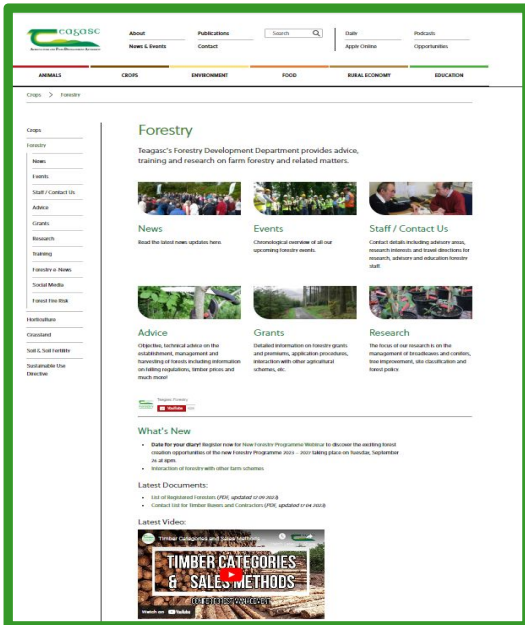
*€250/ha year 3-5 at drystock rate

Case Study 2 – Agroforestry Option

- Farmer B (drystock) has 35 ha
- Eligible for BISS, CRISS, ANC (Category 2) and Organics
- Decides to plant 10 ha of Agroforestry (Silvo-pastoral system) in 2024

Scheme		Per hectare (€)	Total 2024
BISS	(35 ha)	€154.64 x 35	€5,412
CRISS	(30 ha)	€42.34 x 30	€1,270
ANC	(25 ha)	€111x10 +€104 x 15	€2,670
Agroforestry	(10 ha)	€975 x 10	€9,750
Organics (drystock)	(35 ha)	€300 x 35	€10,500
			€29,602

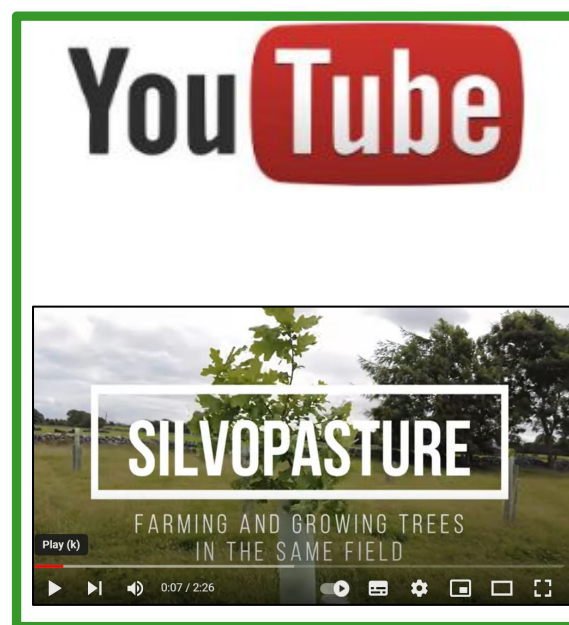
Comprehensive Teagasc Supports



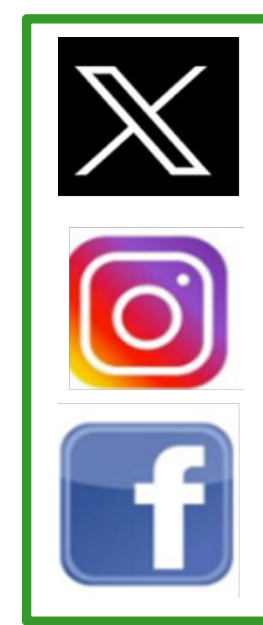
www.teagasc.ie/forestry



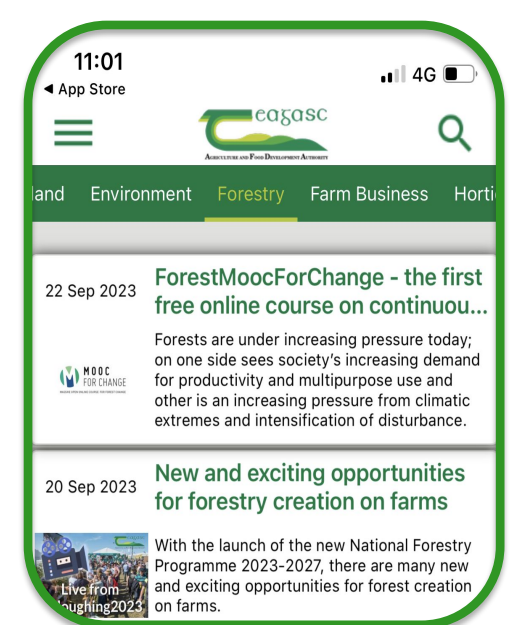
Forestry e-News



Videos on Teagasc Forestry YouTube channel



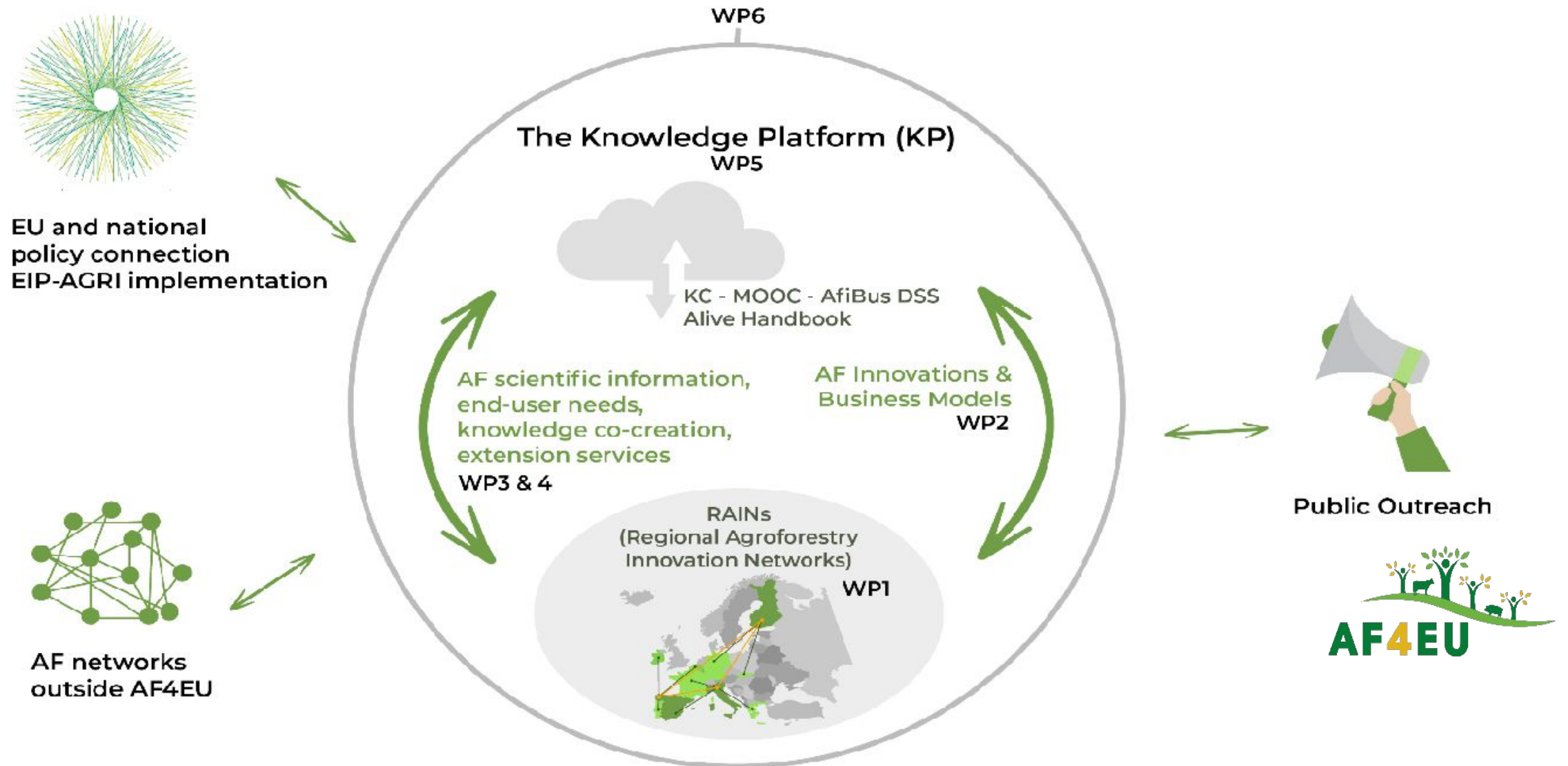
Social media

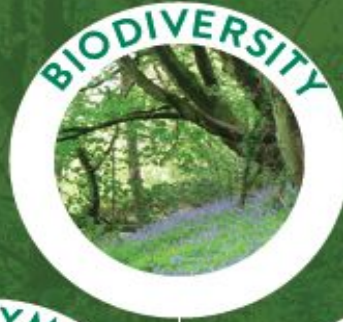


Teagasc App

Resources in development

Agroforestry Business Model Innovation Network (AF4EU) Horizon Project





THANK
YOU

john.casey@teagasc.ie
www.teagasc.ie/forestry