



**An Roinn Talmhaíochta,  
Bia agus Mara**  
Department of Agriculture,  
Food and the Marine

# Agroforestry and the CAP

Dr, Pamela Boyle  
18 Nov 2022

# Overview



- Getting to know CAP
- Agroforestry & CAP
- Ireland's CSP & Agroforestry

# Getting to know CAP



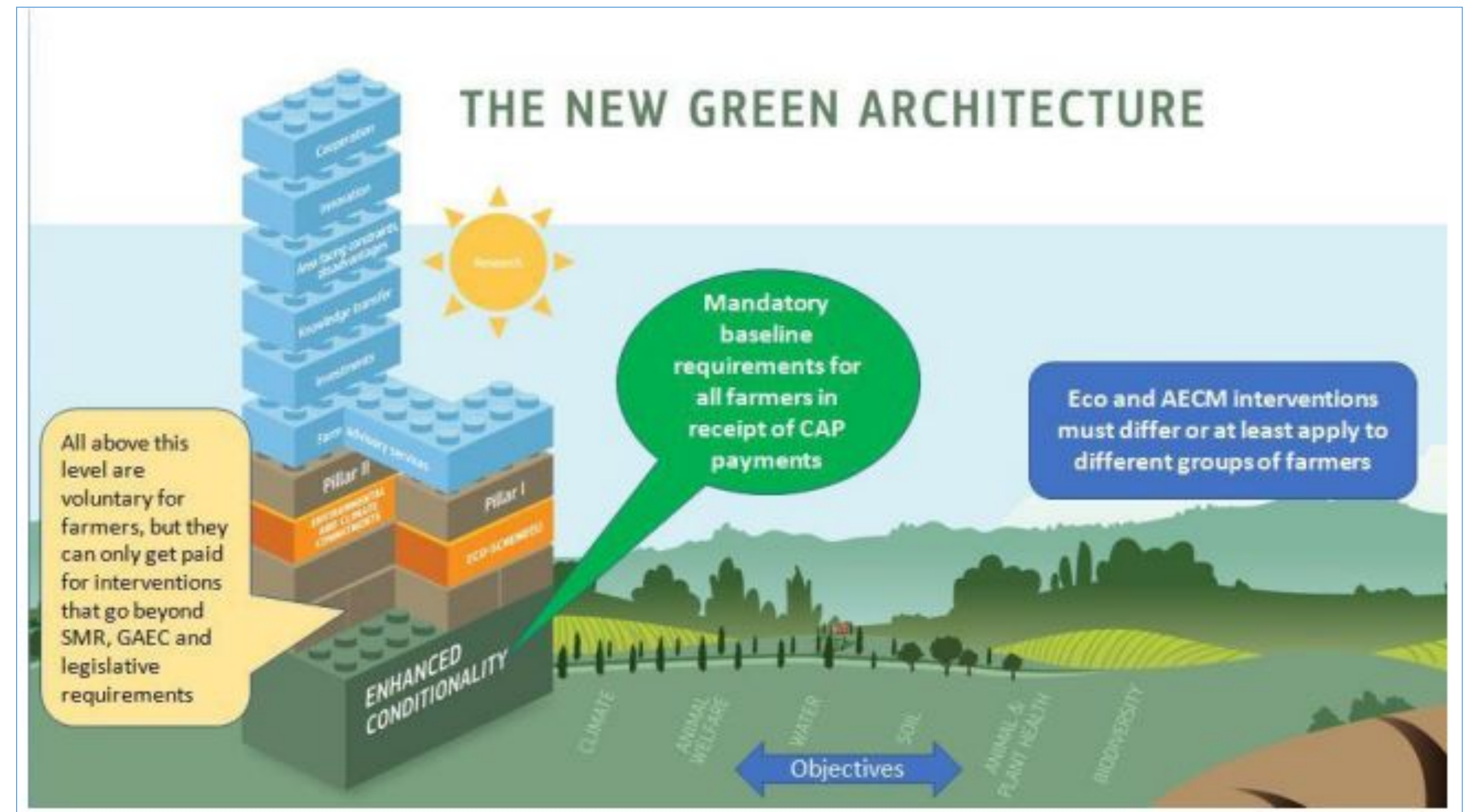
- Common Agricultural Policy (CAP) is the most important driver of agricultural management and sustainability in the EU
- 60 years of CAP – several reforms
- Evolved from single focus to now 10 core objectives





# Getting to know CAP

- CAP 2023 – 2027
- European Green Deal
  - Biodiversity Strategy
  - Farm to Fork Strategy
- New Green Architecture



# Agroforestry and CAP



- Defined in Rural Development Regulation 2013

*“land use systems in which trees are grown in combination with agriculture on the same land”*

- Increased focus in EU Green Deal

# Ireland's CAP Strategic Plan & Agroforestry



- Afforestation policy addressed outside of CAP

BUT

- Agroforestry standards formally included in the definition of agricultural area
- Formally recognised as farm diversification opportunity
- Focus on tree planting actions – PI & II

# Eligible Hectare & Enhanced Conditionality

- Agroforestry standards formally included in the definition of agricultural area
  - 400-1000 trees/ha
  - Tree-to-tree width of 20m is required
  - Species accepted incl Oak, Sycamore, cherry amongst others
  - Grazing and/or fodder production permitted provided damage to trees avoided
- Eligible Hectare
  - Landscape features incl. woodland can occupy up to 50% without penalty

# Enhanced Conditionality



- *Package of measures to address specific issues in relation to climate change, water quality, soil protection, biodiversity and landscape protection...*
- **Good Agricultural and Environmental Condition (GAEC) 8**
  - Maintain non-productive features & areas
  - Groups of trees & scrub
  - Min. 4% per landholding



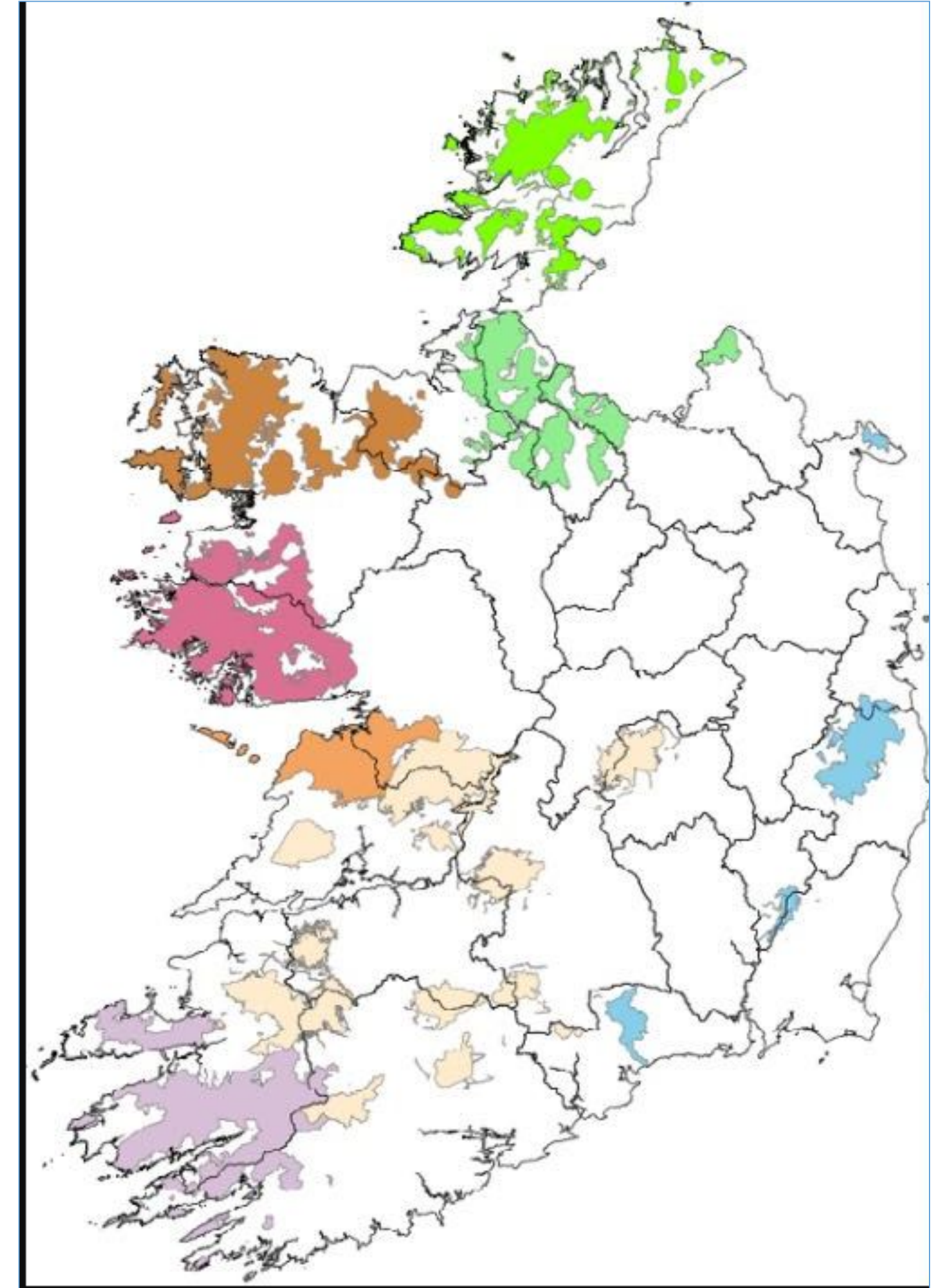
# Ecoscheme



- 8 options to participants
- Voluntary BUT if taken must fulfil requirements with at least 2
- Practice 1 – Space for Nature
  - Min 7% of holding
  - Incl. copse, small woodland
- Practice 4 – Planting of Native Trees/Hedgerows

# ACRES

- General stream
  - Planting trees in riparian buffer zones
  - Planting traditional orchard
  - Tree belts for ammonia capture in farmyards
  - Tree planting
- Co-operation stream
  - Results-based scoring for woodland
  - Landscape actions (tbc)



# European Innovation Partnerships (EIP)



The banner features a large circular logo on the left composed of concentric, overlapping green and blue lines. To its right, the text 'EIP-AGRI' is written in a large, bold, green font, with 'NATIONAL CONFERENCE 2022' in a smaller, grey font below it. Further down, a clock icon is followed by '28 November 2022', and a location pin icon is followed by 'Radisson Blu Hotel, Athlone, Co. Westmeath'. At the bottom, there are four logos: the National Rural Network logo, the EIP-AGRI logo, the logo for An Roinn Talmhaíochta, Bia agus Mara (Department of Agriculture, Food and the Marine), and the logo for The European Agricultural Fund for Rural Development (Europe Investing in Rural Areas).

**EIP-AGRI**  
NATIONAL CONFERENCE 2022

🕒 28 November 2022

📍 Radisson Blu Hotel, Athlone, Co. Westmeath

National Rural Network | eip-agri | An Roinn Talmhaíochta, Bia agus Mara | Department of Agriculture, Food and the Marine | The European Agricultural Fund for Rural Development | Europe Investing in Rural Areas



© Clive Bright



**An Roinn Talmhaíochta,  
Bia agus Mara**  
Department of Agriculture,  
Food and the Marine

# Thank you